



Felco Bedding Conveyors



The **Felco Bedding Conveyor** allows an excavator operator to control when, where, and how much bedding material is placed in the trench while bedding pipe.

Mounted between the tracks and attached to the carbody, the **Felco Bedding Conveyor** taps into the excavator's track drive circuit to power the conveyor's hydraulic motor. The 3 to 8 cubic yard hopper is mounted on the rear of the conveyor, providing clearance from the counterweight and allowing the excavator to move freely along its tail swing arc. The standard **Bedding Conveyor**, delivering one cubic yard of bedding material every 7 to 10 seconds, is easily removed using quick disconnects on the hydraulic lines and pin connections holding the conveyor to the carbody.

Using a loader to charge the hopper with bedding material, the conveyor transports the material between the tracks to the nose of the conveyor and into the bucket. Because the operator controls the conveyor from inside the cab, he can fill the bucket with the exact amount of bedding material and place it where and when he needs it.

While the **Bedding Conveyor** is indispensable for projects with tight work areas and narrow alleyways, it will also increase production on other projects. Efficient and timely material placement increases production, reduces job

and street congestion, and minimizes the impact of overheads. Placing bedding material with a **Bedding Conveyor** is more efficient than cycling to a stone box or dumping directly into the trench with a loader.

In addition to increased production, using a **Bedding Conveyor** has safety benefits! With the operator controlling the conveyor from inside the cab, he has a direct line of sight into the trench and on either side. Filling the **Bedding Conveyor** hopper with material rather than dumping from the trench side keeps a loader away from the trench edge, reducing the opportunity for accidents.

With six models, **Felco Industries** has a **Bedding Conveyor** to fit almost every excavator and job site. Let **Felco** provide production, efficiency, and safety to any project.



800-221-5427

www.felco-ind.com
products@felco-ind.com

"Why do I like my Felco Bedding Conveyor? I can get 6 feet extra pipe bedded in an hour!"

J.P. - Williams Plumbing

Felco Bedding Conveyor Installation - Summary

The **Bedding Conveyor** consists of five parts: the main frame, the nose section, the power unit assembly, the excavator-mounted hydraulics, and the hopper. Because the conveyor is attached to the carbody, special considerations are given to hydraulic supply, electrical supply, and 360-degree rotation of the upper house.

The following provides a brief summary of the **Bedding Conveyor** installation procedures. For detailed instructions please contact **Felco Industries**.

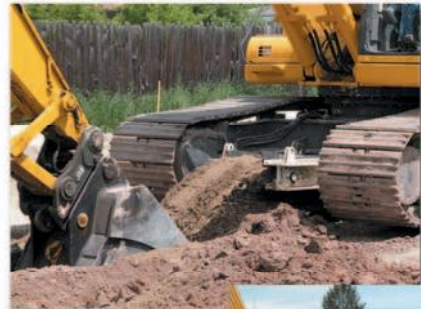
Felco recommends that a **Felco** installation technician or an experienced dealer representative participate in any **Bedding Conveyor** installation.

Conveyor Mounting Basics

The **Felco Bedding Conveyor** is usually mounted with the hopper on the idler end of the undercarriage, so digging can take place over the sprocket end. This position is approved by John Deere, Caterpillar, and Komatsu. The **Bedding Conveyor** pins to mounting ears that are welded to the excavator's carbody. The track drive hydraulic circuit powers the conveyor. Controls for the conveyor are installed in the cab.

Supplied by Customer

The customer has the primary obligation to perform the installation, including all related work. **Felco** will arrange for an installation technician to supervise the installation and train operators on the proper use and operation of the **Bedding Conveyor**.



Materials & Equipment

1. Blocking material or jacks —to hold conveyor in position under the carbody for welding the mounting eyes.
2. Come-along and chains or cables —to lift and position the conveyor.
3. Bedding material (about 4 yards) —to test conveyor operation and make adjustments.

Labor (Approx. 40 man-hours)

1. Competent welder
 - Must be equipped with welding machine and acetylene torch with supplies.
2. Mechanic
 - Must be equipped with tools to work the hydraulics, electrical, and mechanical systems and learn the conveyor operation.



800-221-5427

www.felco-ind.com
products@felco-ind.com