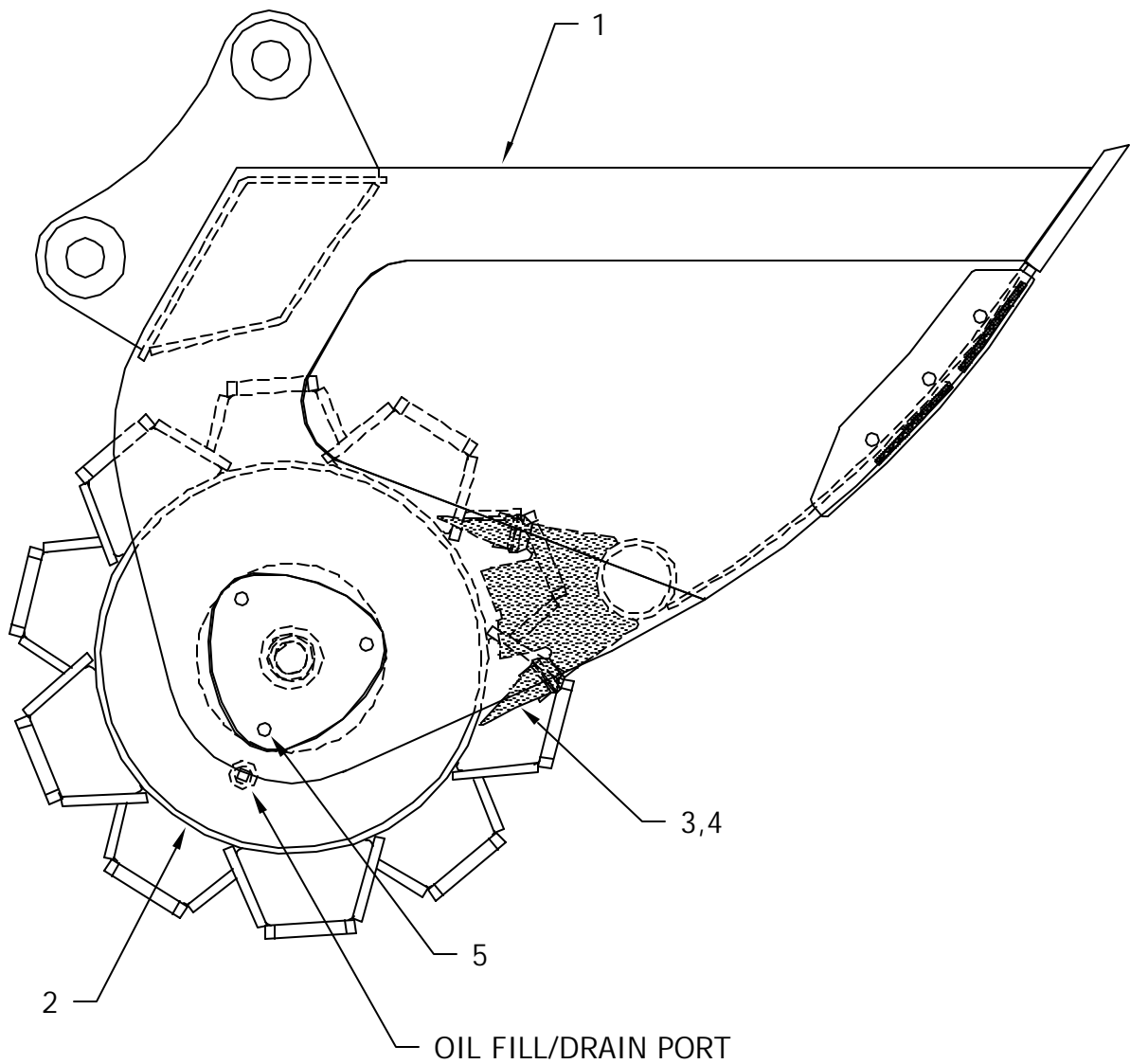
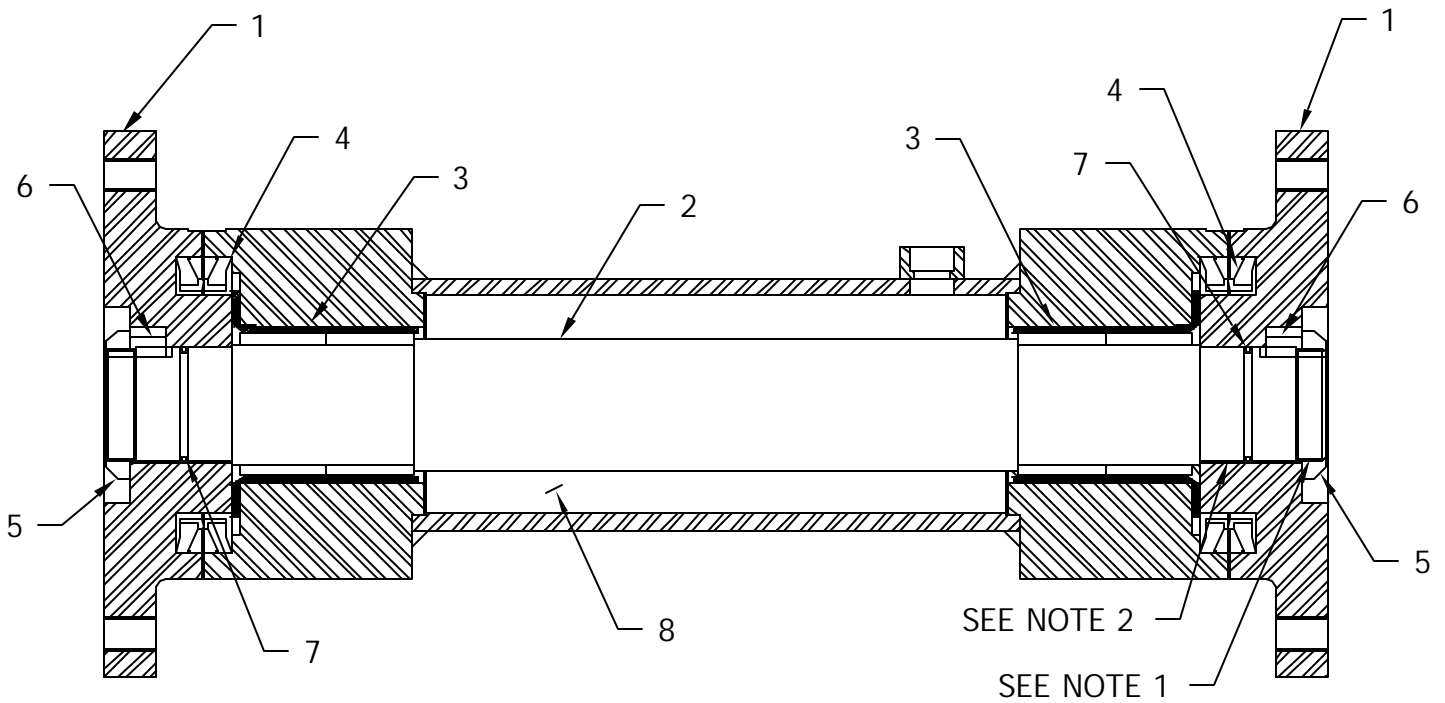


# PARTS: 24 x 48 ROLLER BUCKET



ITEM	PART NUMBER	QTY	DESCRIPTION
1	203380	1	24 X 48 ROLLER BUCKET SHELL
2	203381	1	24" TAMPING WHEEL, COMPLETE
3	920464	6	SCRAPER TOOTH
4	920462	6	LOCK PIN
5		6	$\frac{3}{4}$ x 1 $\frac{3}{4}$ GRD 5 CAP SCREW

# PARTS: 24" 'F' SERIES AXLE ASSEMBLY

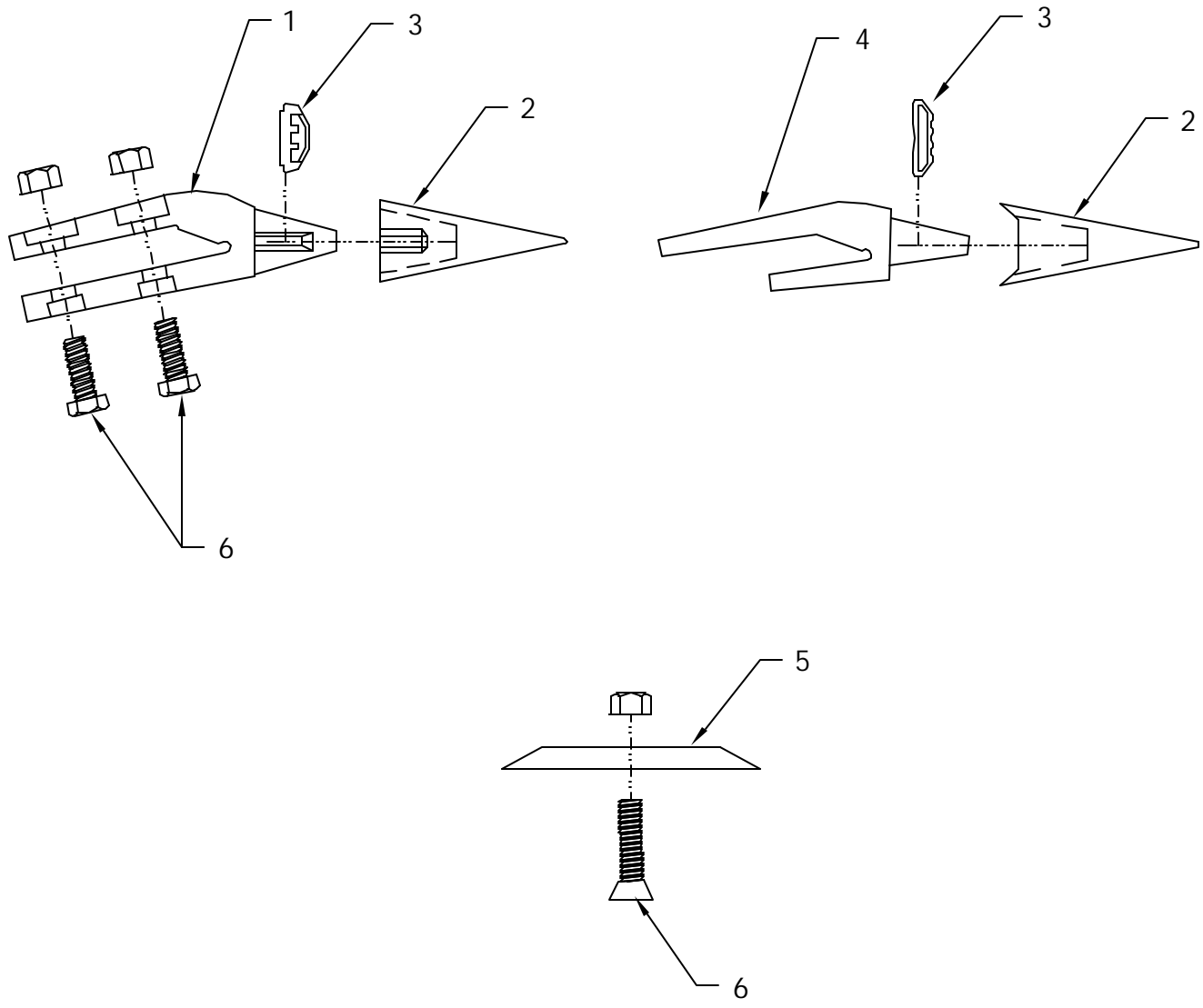


## **GENERAL NOTES:**

1. USE LOCTITE 262 HIGH STRENGTH, AS PER DIRECTIONS, TYPICAL BOTH ENDS.
2. USE LOCTITE 680, AS PER DIRECTIONS, TYPICAL BOTH ENDS.

ITEM	PART NUMBER	QTY	DESCRIPTION
1	203290	2	CAP
2	205004	1	SHAFT ASSEMBLY
3	920428	2	BEARING
4	920424	2	SEAL
5	920422	2	BEARING LOCK NUT
6	922140	2	½" SQUARE KEY x ¾"
7	920423	2	O-RING
8		3 QTS	30 WEIGHT OIL

# OPTIONAL BUCKET PARTS



ITEM	PART NUMBER	QTY	DESCRIPTION
1	920471	4	BOLT-ON ADAPTER
2	920477	4	TOOTH
3	920479	4	LOCK PIN
4	920467	4	WELD-ON ADAPTER
5	925182	1	BOLT-ON CUTTING EDGE
6	INCLUDED		MOUNTING HARDWARE