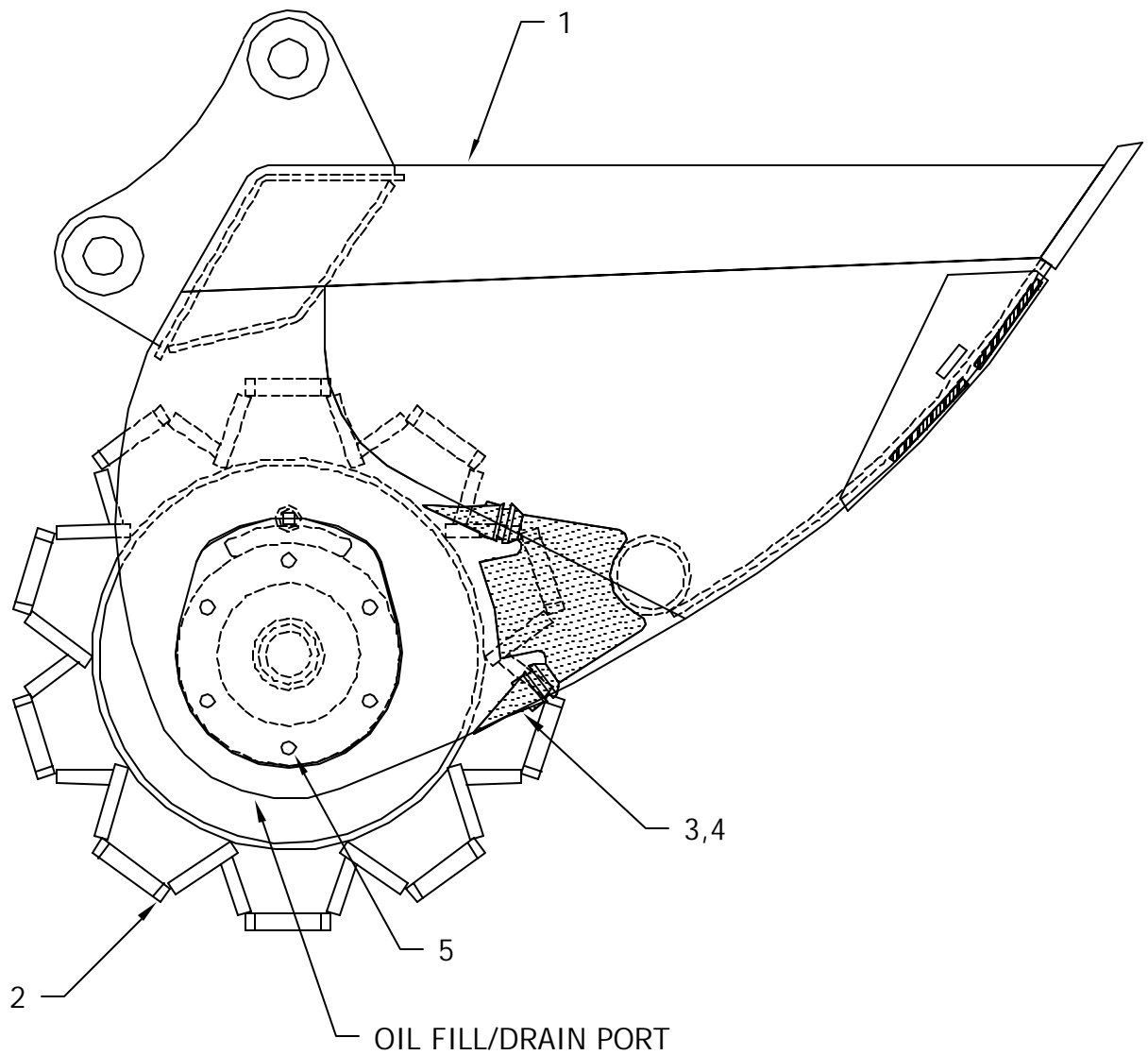
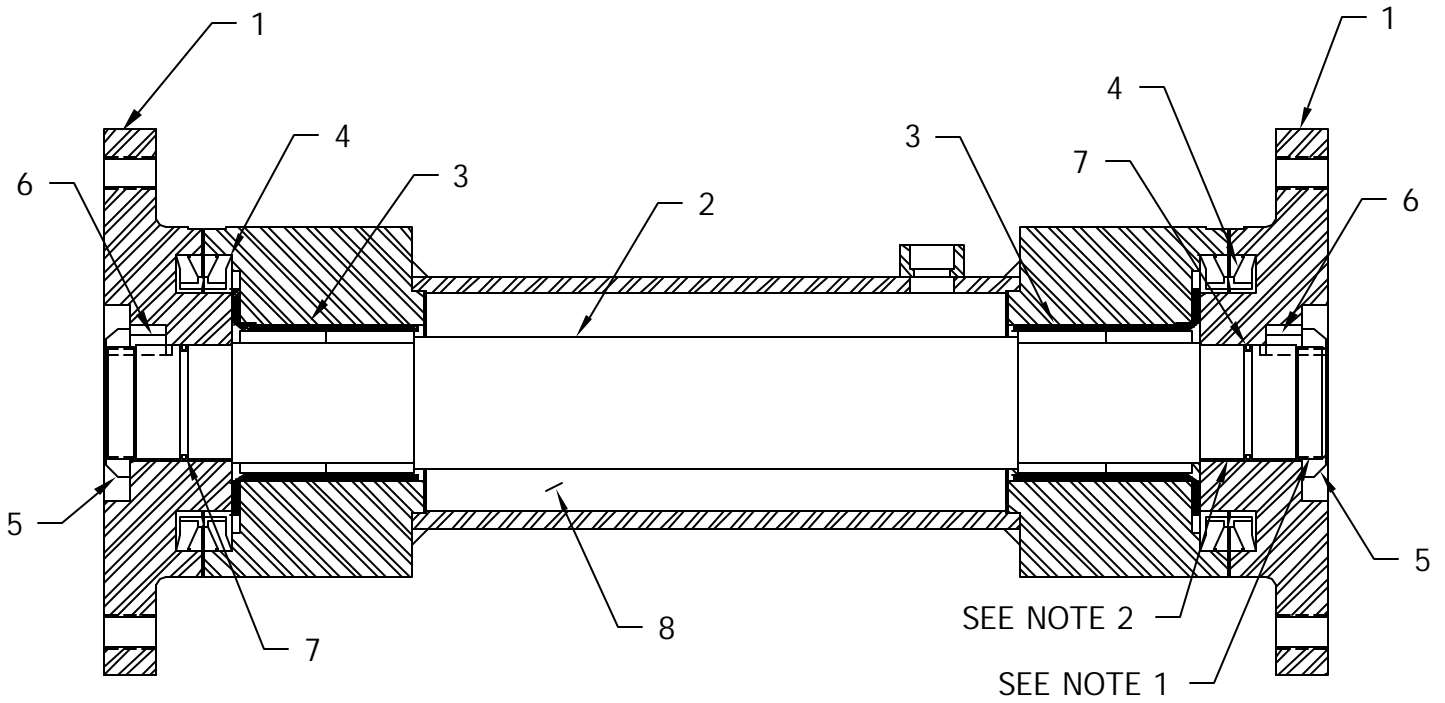


PARTS: 24 x 48 HD ROLLER BUCKET



ITEM	PART NUMBER	QTY	DESCRIPTION
1	204651	1	24 X 48 H ROLLER BUCKET SHELL
2	202135	1	24" TAMPING WHEEL, COMPLETE
3	920464	6	SCRAPER TOOTH
4	920462	6	LOCK PIN
5		12	$\frac{3}{4}$ X 1 $\frac{3}{4}$ GRD 5 CAP SCREW

PARTS: 24" 'E' SERIES AXLE ASSEMBLY

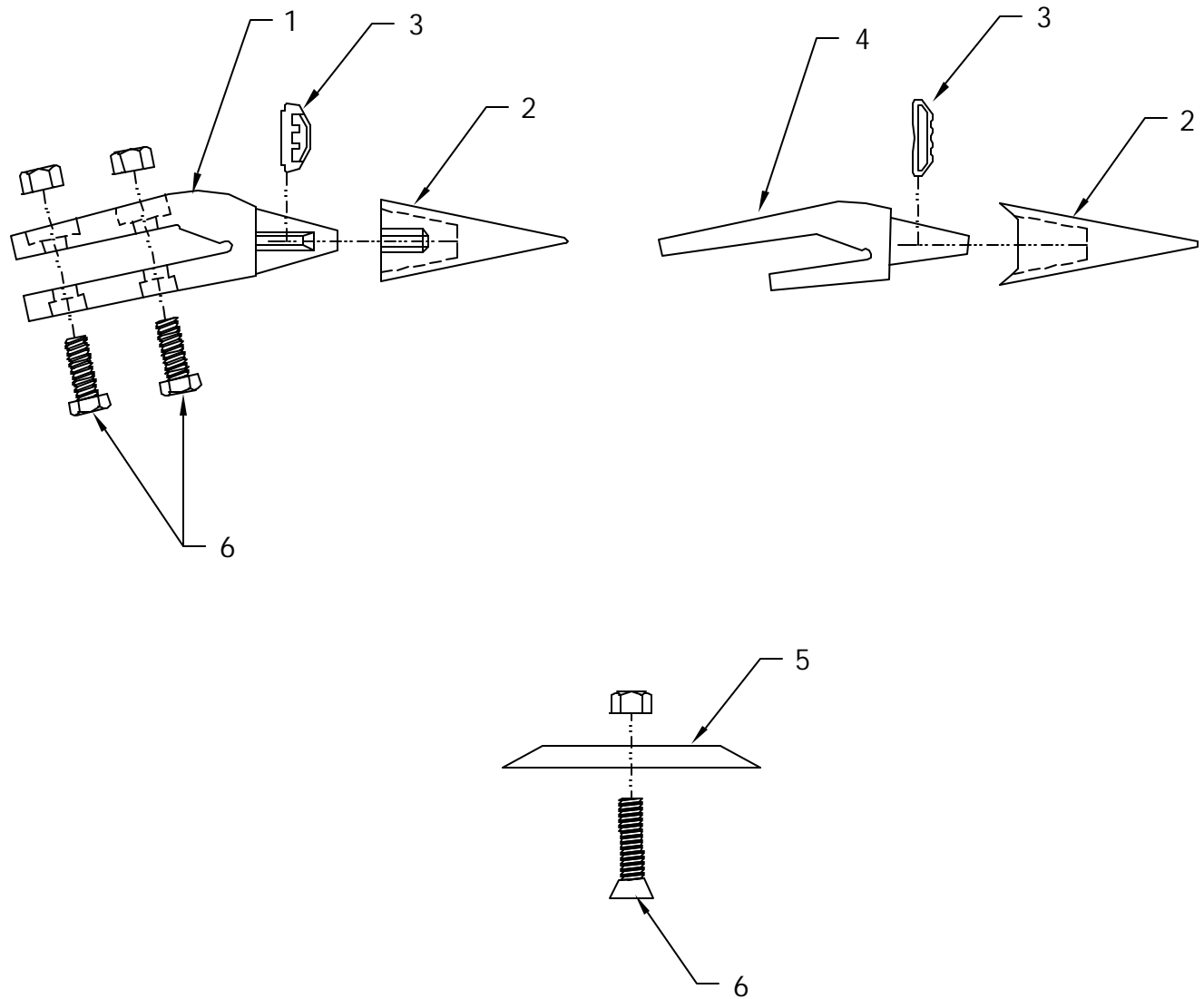


GENERAL NOTES:

1. USE LOCTITE 262 HIGH STRENGTH, AS PER DIRECTIONS, TYPICAL BOTH ENDS.
2. USE LOCTITE 680, AS PER DIRECTIONS, TYPICAL BOTH ENDS.

ITEM	PART NUMBER	QTY	DESCRIPTION
1	203116	2	CAP
2	203210	1	SHAFT ASSEMBLY
3	920391	2	BEARING
4	920384	2	SEAL
5	920416	2	BEARING LOCK NUT
6	922140	2	½" SQUARE KEY x ¾"
7	920390	2	O-RING
8		3 QTS	30 WEIGHT OIL

OPTIONAL BUCKET PARTS



ITEM	PART NUMBER	QTY	DESCRIPTION
1	920471	4	BOLT-ON ADAPTER
2	920477	4	TOOTH
3	920479	4	LOCK PIN
4	920467	4	WELD-ON ADAPTER
5	925182	1	BOLT-ON CUTTING EDGE
6	INCLUDED		MOUNTING HARDWARE